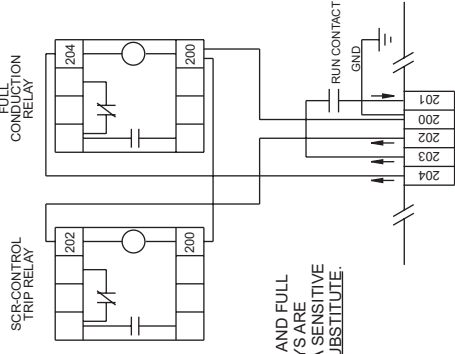


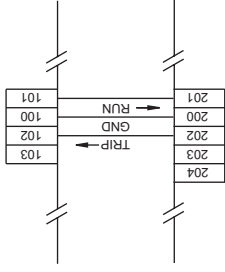
CONNECTION WITHOUT CONVEYOR CONTROL:



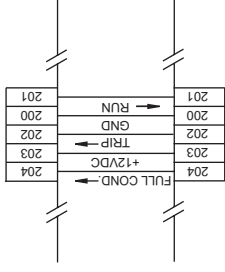
NOTE:

SCR-CONTROL TRIP AND FULL CONDUCTION RELAYS ARE 5/0-5000S-SII SIGMA SENSITIVE RELAYS - DO NOT SUBSTITUTE.

INTERCONNECTION WITH:
SEL-1APM
SEL-0680-LECC
SEL-0680-RECC
SEL-1078-DCC

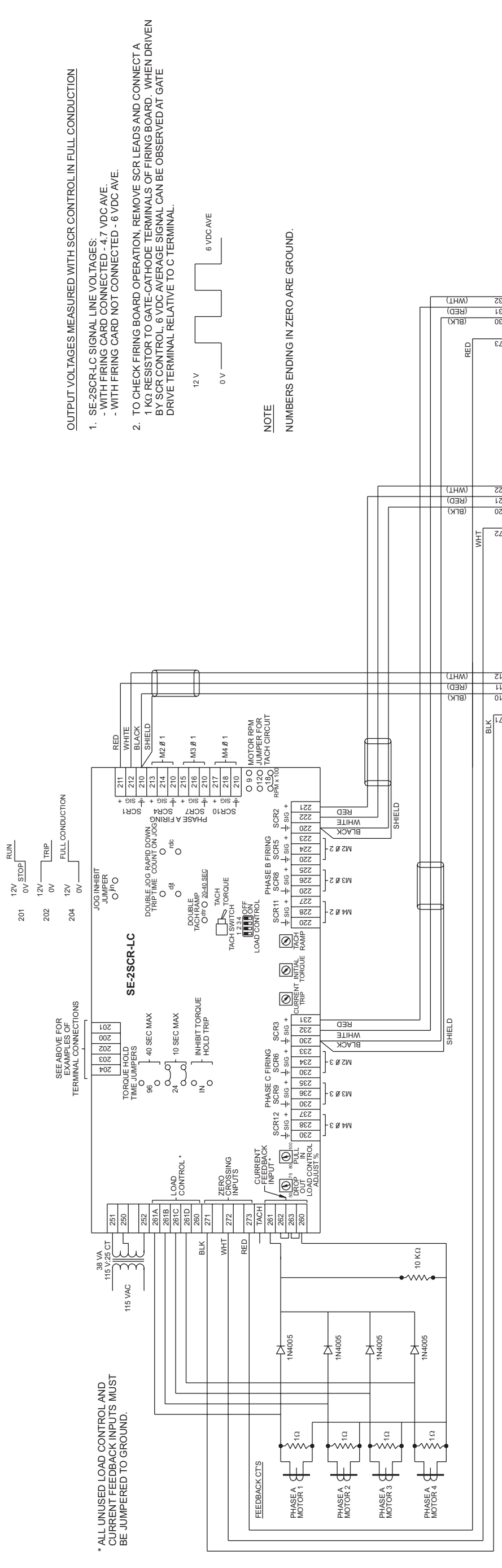


INTERCONNECTION WITH:
SE-MIM
SE-MIMD



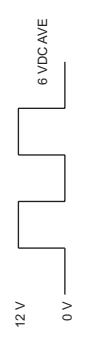
SOLID STATE STARTER

SE-2SCR-LC CONNECTIONS FOR STAND ALONE, CONVEYOR CONTROL, AND MIM APPLICATIONS.



OUTPUT VOLTAGES MEASURED WITH SCR CONTROL IN FULL CONDUCTION

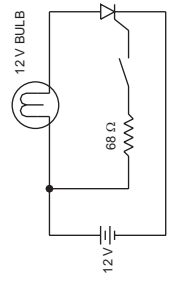
- SE-2SCR-LC SIGNAL LINE VOLTAGES:
- WITH FIRING CARD CONNECTED - 4.7 VDC AVE.
- WITH FIRING CARD NOT CONNECTED - 6 VDC AVE.
- TO CHECK FIRING BOARD OPERATION, REMOVE SCR LEADS AND CONNECT A 1 KΩ RESISTOR TO GATE-CATHODE TERMINALS OF FIRING BOARD. WHEN DRIVEN BY SCR CONTROL, 6 VDC AVERAGE SIGNAL CAN BE OBSERVED AT GATE DRIVE TERMINAL RELATIVE TO C TERMINAL.



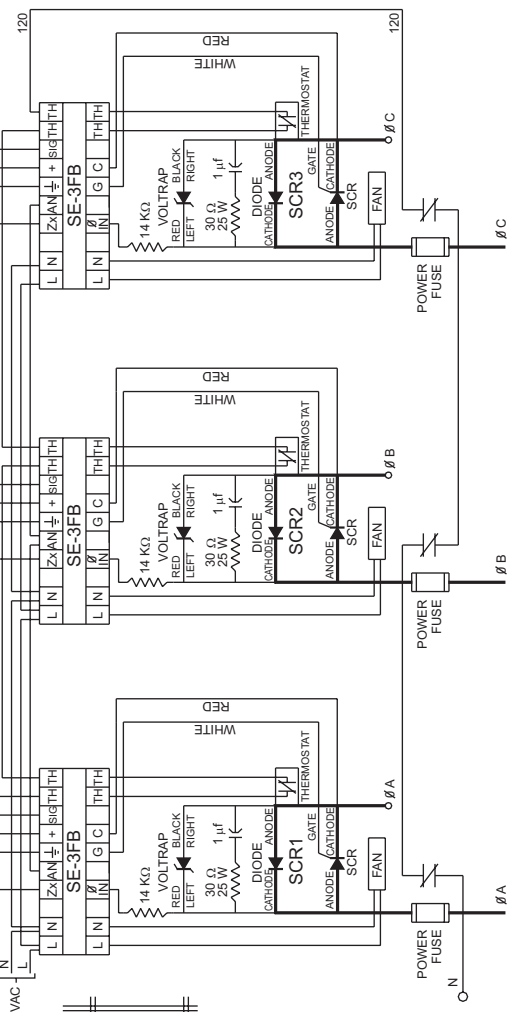
NOTE
NUMBERS ENDING IN ZERO ARE GROUND.



CAUTION
FIRING BOARDS ARE AT LINE POTENTIAL.



TO CHECK AN SCR, THE CIRCUIT AT THE LEFT MAY BE USED. WHEN THE SWITCH IS MOMENTARILY CLOSED, THE LIGHT SHOULD COME ON AND REMAIN ON UNTIL THE SUPPLY IS REMOVED. THIS TEST IS MEANT FOR OPERATIONAL TEST AND DOES NOT CHECK AN SCR'S FORWARD OR REVERSE BLOCKING CAPABILITY.
MEASURED WITH AN OHMMETER, THE SCR SHOULD BE HIGH IMPEDANCE IN BOTH DIRECTIONS. THE PARALLEL DIODE SHOULD READ ALLOW IMPEDANCE IN ONE DIRECTION AND A HIGH IMPEDANCE IN THE OPPOSITE DIRECTION.



SE-901PM POWER MODULES

SE STARTCO
ENGINEERING LTD.
406 Jessop Avenue, Saskatoon, SK Canada S7N 2S5
Ph: (306) 373-5505 Fx: (306) 374-2245 www.startco.ca

The information and know-how contained on this drawing are the property of Startco Engineering Ltd. and may not be copied or reproduced without the written permission of Startco Engineering Ltd., nor may they be used in any manner directly or indirectly detrimental to the interest of Startco Engineering Ltd.

SE-2SCR-LC
DIGITAL SCR CONTROL
CONNECTION DIAGRAM

| | |
|------------------|-----------------------------------|
| Dwg/File Name: | SE2SCR-4.CDR |
| For Publication: | SE-2SCR-LC-M |
| File Location: | ginah/data/letters/ old_manual |
| Originator: | BB/KP |
| Drawn By: | BV (CAD); GH (Corel) |
| Revision: | 0 |
| Revision Date: | 970505 |