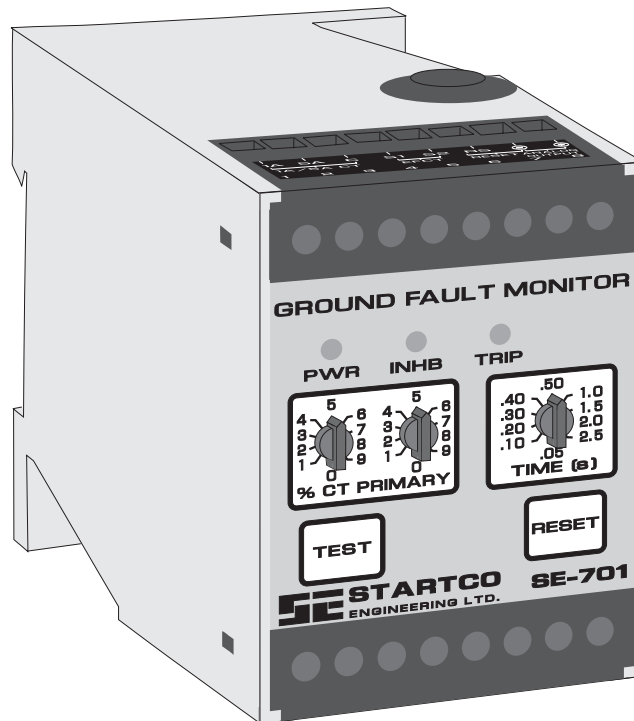


SE-701 MANUAL GROUND-FAULT MONITOR

January 18, 2008

Revision 6



Copyright © 2008 by Startco Engineering Ltd.

All rights reserved.

This page intentionally left blank.



TABLE OF CONTENTS

	PAGE
Table of Contents	i
List of Figures	i
List of Tables.....	i
1. Introduction	1
1.1 General	1
1.2 Current-Transformer Selection.....	1
2. Operation	1
2.1 Configuration-Switch Settings	1
2.1.1 Relay Operating Mode.....	1
2.1.2 Trip Inhibit.....	1
2.1.3 CT Verification.....	1
2.1.4 Filter Selection.....	1
2.1.5 Reset Mode	1
2.2 Front-Panel Controls	2
2.2.1 Ground-Fault Trip Level.....	2
2.2.2 Ground-Fault Trip Time	2
2.2.3 Reset	2
2.2.4 Test	2
2.3 Front-Panel Indication	2
2.3.1 Power.....	2
2.3.2 Trip	2
2.3.3 Trip Inhibit.....	2
2.4 Analog Output	2
2.5 Self Diagnostics.....	2
3. Installation	2
4. SE-701 Compatibility	4
5. Technical Specifications	10
6. Ordering Information	11
7. Warranty.....	11
8. Ground-Fault Performance Test.....	12

LIST OF FIGURES

	PAGE
1. SE-701 Outline and Mounting Details.....	3
2. Typical Connection Diagram	4
3. EFCT-1 Sensitive Earth-Fault CT.....	5
4. EFCT-2 Sensitive Earth-Fault CT.....	6
5. EFCT-26 Sensitive Earth-Fault CT.....	7
6. PMA-55 Panel-Mount Adapter	8
7. PMA-60 Panel-Mount Adapter	9
8. Ground-Fault-Test Circuits	12

LIST OF TABLES

	PAGE
1. Trip-Features Comparison	4
2. Ground-Fault-Test Record	12

DISCLAIMER

Specifications are subject to change without notice. Startco Engineering Ltd. is not liable for contingent or consequential damages, or for expenses sustained as a result of incorrect application, incorrect adjustment, or a malfunction.



This page intentionally left blank.



1. INTRODUCTION

1.1 GENERAL

The SE-701 is a microprocessor-based ground-fault monitor for resistance-grounded and solidly grounded systems. It is uniquely suited for use on systems with significant harmonic content. Its output relay can operate in the fail-safe or non-fail-safe mode for undervoltage or shunt-trip applications. The SE-701 has one output relay with isolated normally open and normally closed contacts for use in independent control circuits. Additional features include LED trip, power, and inhibit indication, autoreset or latching trips with front-panel and remote reset, trip memory, test switch, self diagnostics, 0- to 5-V analog output, inputs for standard and sensitive ground-fault current transformers, CT verification for sensitive current transformers, digital selector switches, switch-selectable algorithms for fixed-frequency or variable-frequency applications, and an inhibit that can be enabled to prevent the output relay from operating during a high-current ground fault.

Ground-fault current is sensed by a core-balance zero-sequence current transformer (CT). The trip level of the ground-fault circuit is switch selectable in 1% increments from 1 to 99% of the CT-primary rating.

1.2 CURRENT-TRANSFORMER SELECTION

An SE-701 has inputs for 1-, 5-A, and sensitive 50-mA-secondary CT's. Choose a CT that provides the required ground-fault-trip range.

For ground-fault detection, the ground-fault trip level must be substantially below the prospective ground-fault current. In a solidly grounded system, prospective ground-fault current is similar to phase-fault current. In a resistance-grounded system, prospective ground-fault current is defined by the neutral-grounding-resistor let-through-current rating.

In a solidly grounded system, protection against arcing ground faults requires a ground-fault CT that will detect low-level fault current but not saturate up to the operating value of the system overcurrent protection. In general, immunity to saturation is proportional to CT mass.

To eliminate nuisance tripping, surge current must not saturate the CT.

For low-level ground-fault protection use an EFCT-1, EFCT-2, or EFCT-26 sensitive earth-fault CT with a 5-A-primary rating. However, protection at this level might not be possible because of high surge current or prospective ground-fault current.

For CT-selection assistance, see Technical Information 11.1 available at www.startco.ca

2. OPERATION

2.1 CONFIGURATION-SWITCH SETTINGS

See Fig. 1.

2.1.1 RELAY OPERATING MODE

Switch 1 is used to set the operating mode of the output relay. In the fail-safe mode, the output relay energizes when the ground-fault circuit is not tripped. In the fail-safe mode, non-volatile memory retains the trip status of the SE-701. If tripped, and the supply voltage is cycled, the SE-701 will remain tripped, with the trip relay de-energized and the TRIP LED on, until reset.

In the non-fail-safe mode, the output relay energizes when a ground-fault trip occurs. In the non-fail-safe mode, trip status is not retained in non-volatile memory.

2.1.2 TRIP INHIBIT

Switch 2 is used to select Class I or Class II operation. In the OFF position, high-current trip inhibit is off for Class I operation. In the ON position, high-current inhibit is on for Class II operation. If high-current trip inhibit is on and ground-fault current escalates above eleven times the CT-primary rating before the ground-fault circuit trips, the output relay will not operate until ground-fault current falls below eight times the CT-primary rating. This feature allows overcurrent protection to operate in applications where the ground-fault current can be larger than the interrupting capacity of the device tripped by the SE-701.

2.1.3 CT VERIFICATION

Switch 3 is used to enable CT verification with an EFCT-series CT. In the ON position, a trip will occur if the CT is disconnected. Switch 3 must be in the OFF position when an EFCT-series CT is not used.

2.1.4 FILTER SELECTION

Switch 4 is used to select the filtering algorithm for a fixed-frequency (50/60 Hz) or variable-frequency application. The FIXED FREQUENCY setting uses a DFT filter that allows lower trip levels to be used by rejecting harmonics that can cause nuisance tripping.

The VARIABLE FREQUENCY setting uses a peak-detection algorithm with a wider band width for fault detection in variable-frequency drive applications.

2.1.5 RESET MODE

Switch 5 is used to select autoreset or latching trips. See Section 2.2.3.



2.2 FRONT-PANEL CONTROLS

2.2.1 GROUND-FAULT TRIP LEVEL

The % CT PRIMARY selector switches are used to set the ground-fault trip level as a percentage of the CT-primary rating.

In tripping systems, a ground-fault trip level of 10 to 20% of the prospective ground-fault current is often used. In alarm-only systems, a value of 50% of the prospective ground-fault current is often used. To avoid sympathetic tripping, the trip level must be above the charging current of the protected feeder.

A 0% selection provides protection at 1%.

2.2.2 GROUND-FAULT TRIP TIME

The SE-701 has a definite-time trip characteristic. The TIME (s) selector switch is used to set the ground-fault trip delay time for coordination with upstream and downstream ground-fault devices. Coordination requires the same trip level for all ground-fault devices in a system and the trip time to progressively increase upstream. The amount of equipment removed from the system will be a minimum if the first ground-fault device to operate is the one immediately upstream from the fault.

2.2.3 RESET

If the Reset Mode switch is in the LATCHING position, a trip remains latched until the RESET switch is pressed or the remote-reset terminals are momentarily connected. In the non-fail-safe mode, cycling the supply voltage will also reset the SE-701.

If the Reset Mode switch is in the AUTORESET position, a trip will reset when the fault is removed.

The reset circuit responds only to a momentary closure so that a jammed or shorted switch will not prevent a trip. The front-panel RESET switch is inoperative when the remote-reset terminals (6 and 7) are connected.

2.2.4 TEST

The TEST switch is used to test the ground-fault circuit, the indication, and the output relay. When the TEST switch is pressed for one second, a test signal is applied to the ground-fault-detection circuit, the circuit will trip, the TRIP LED will light, and the output relay will operate. If high-current inhibit has been selected, the INHB LED will light.

2.3 FRONT-PANEL INDICATION

2.3.1 POWER

The green LED labeled PWR indicates the presence of supply voltage.

2.3.2 TRIP

The red LED labeled TRIP indicates a trip. A solid red LED indicates a ground-fault trip. A regularly flashing LED indicates a trip initiated by a CT fault. Two fast flashes indicate a diagnostic trip. See Section 2.5.

2.3.3 TRIP INHIBIT

The yellow LED labeled INHB indicates that output-relay operation was inhibited during a high-current ground fault. See Section 2.1.2. When a ground-fault trip occurs during a high-current ground fault, both the TRIP and INHB LED's will be ON. Inhibit indication is reset when the ground-fault trip is reset. Inhibit operation and indication will not respond if the trip-inhibit switch is in the OFF position.

2.4 ANALOG OUTPUT

The non-isolated, 0- to 5-V analog output indicates ground-fault current sensed by the ground-fault CT. The output is 5 V when ground-fault current is 100% of the CT-primary rating.

2.5 SELF DIAGNOSTICS

A diagnostic trip is indicated by two flashes of the TRIP LED. It can be caused by a diagnostic problem detected by the watchdog timer or from an incorrect reading from non-volatile memory. Press RESET or cycle supply voltage. If the problem persists, consult Startco.

3. INSTALLATION

An SE-701 can be surface or DIN-rail-mounted. See Fig. 1. Panel mounting requires a PMA-55 or PMA-60 Panel-Mount Adapter. See Figs. 6 and 7.

Pass the phase conductors through the CT window as shown in Fig. 2 (for 4-wire and single-phase systems, also pass the neutral conductor through the CT window). Do not pass ground conductors through the CT window. In applications that require shields or drain wires to pass through the CT window, return them through the CT window before connecting them to ground. If a ground fault CT with a 5-A secondary is used, connect it to terminals 2 and 3 (terminals 1 and 3 with a 1-A secondary) and ground terminal 3. If an EFCT-x is used, connect it to terminals 4 and 5, connect the shield to terminal 5, and ground terminal 5. Remove the connection to terminal 9 for dielectric-strength testing—all inputs and outputs have ANSI/IEEE C37.90 surge-protection circuits that conduct above 300 Vac. See Figs. 3, 4, and 5 for sensitive EFCT-x dimensional drawings.

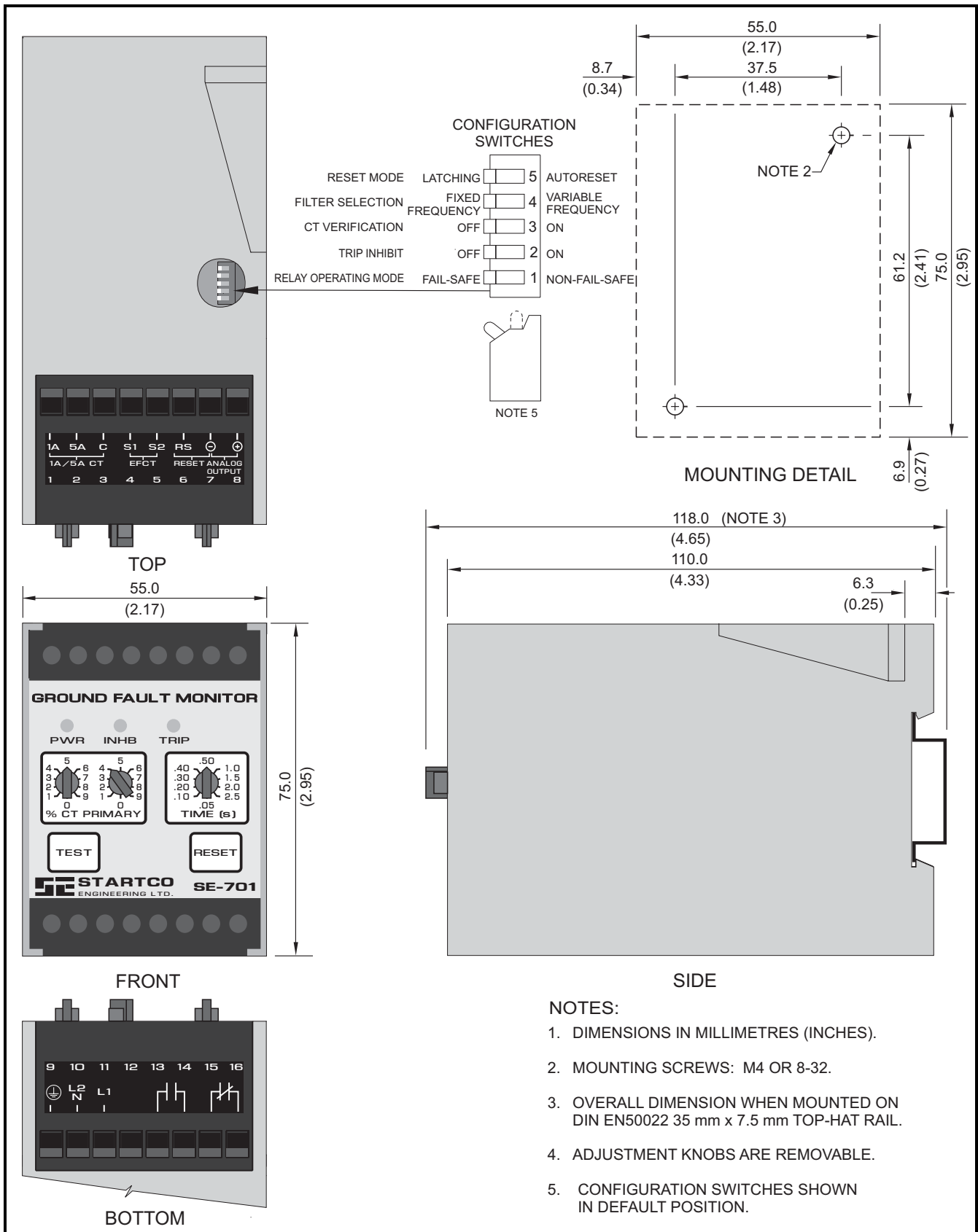


FIGURE 1. SE-701 Outline and Mounting Details.

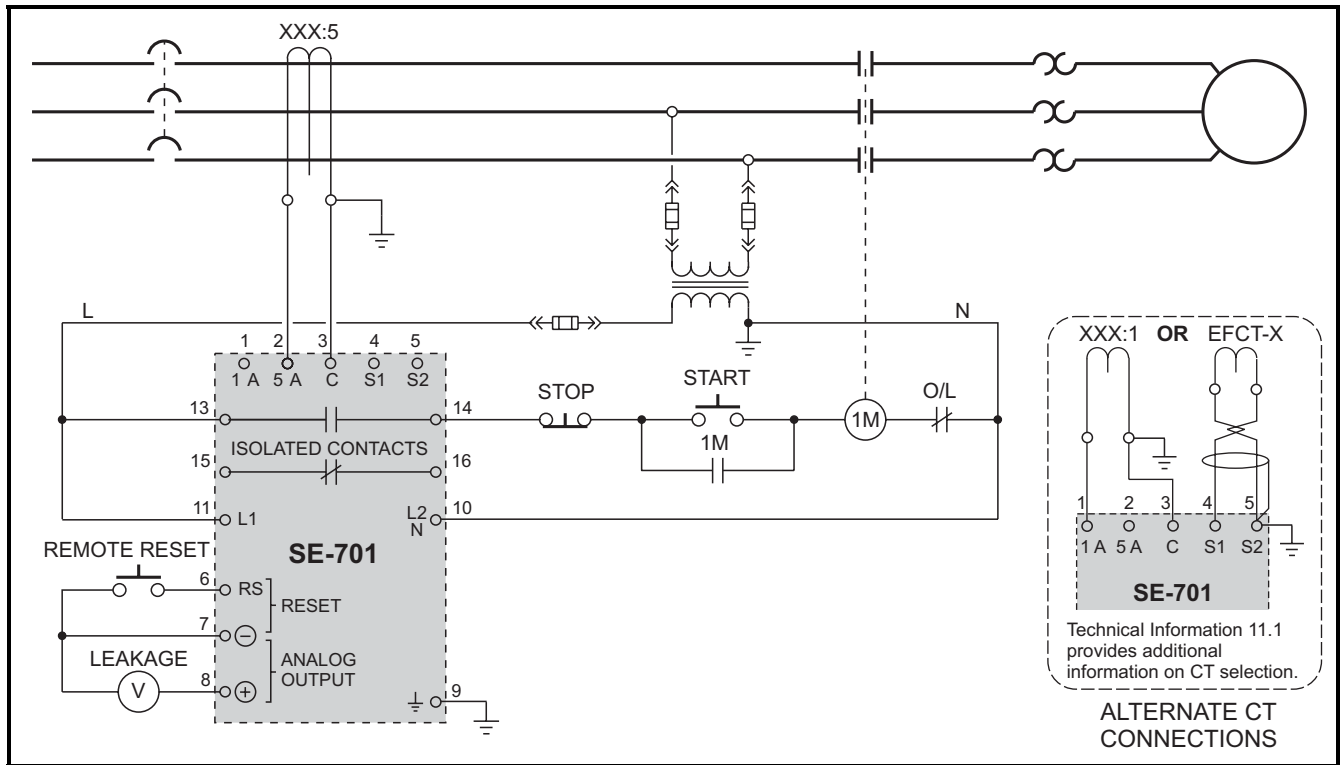


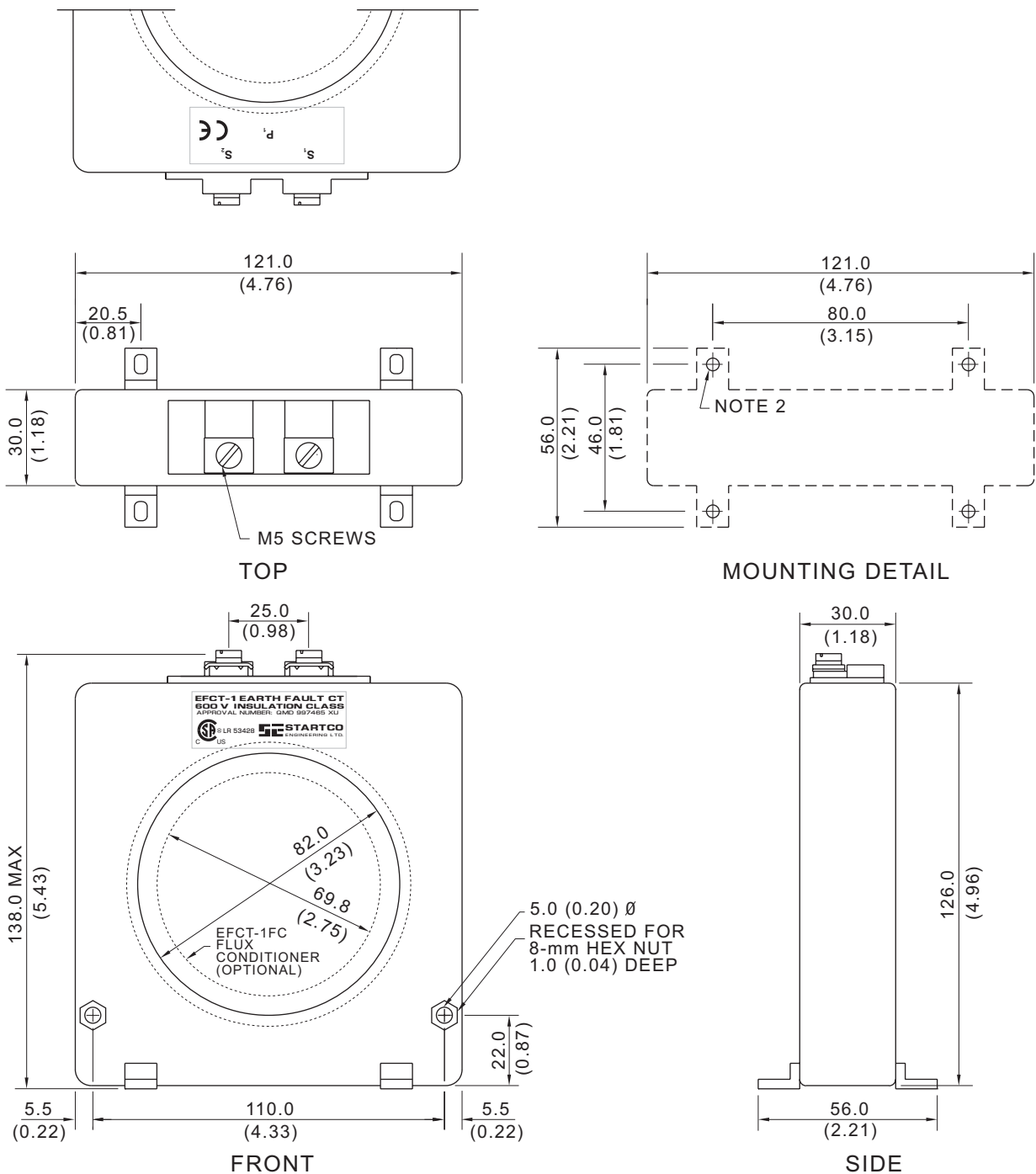
FIGURE 2. Typical Connection Diagram.

4. SE-701 COMPATIBILITY

The current SE-701 has been enhanced with the addition of non-volatile trip memory for the fail-safe relay operating mode. Prior to hardware revision 07, a mechanical flag was used instead of non-volatile trip memory. The current revision of the SE-701 can directly replace previous revision 00 to 06 units. The hardware-revision number is listed on the SE-701 model/serial-number label affixed to the SE-701 enclosure. Both generations of SE-701 are compared in Table 1.

TABLE 1. TRIP-FEATURES COMPARISON

		HARDWARE REVISION	
		00 to 06	≥ 07
LED trip indication		Yes	Yes
Mechanical flag trip indication		Yes	No
Non-volatile trip memory		No	Yes
Device state after supply voltage cycled when tripped (ground-fault removed)	Fail-safe	Trip LED: Off Trip relay: Energized Trip flag: Red	Trip LED: On Trip relay: De-energized
	Non-fail-safe	Trip LED: Off Trip relay: De-energized Trip flag: Red	Trip LED: Off Trip relay: De-energized



NOTES:

1. DIMENSIONS IN MILLIMETRES (INCHES).
2. MOUNTING SCREWS: M4 OR 8-32.
3. PRESS MOUNTING FEET IN PLACE USING INSTALLATION TOOL PROVIDED.

FIGURE 3. EFCT-1 Sensitive Earth-Fault CT.

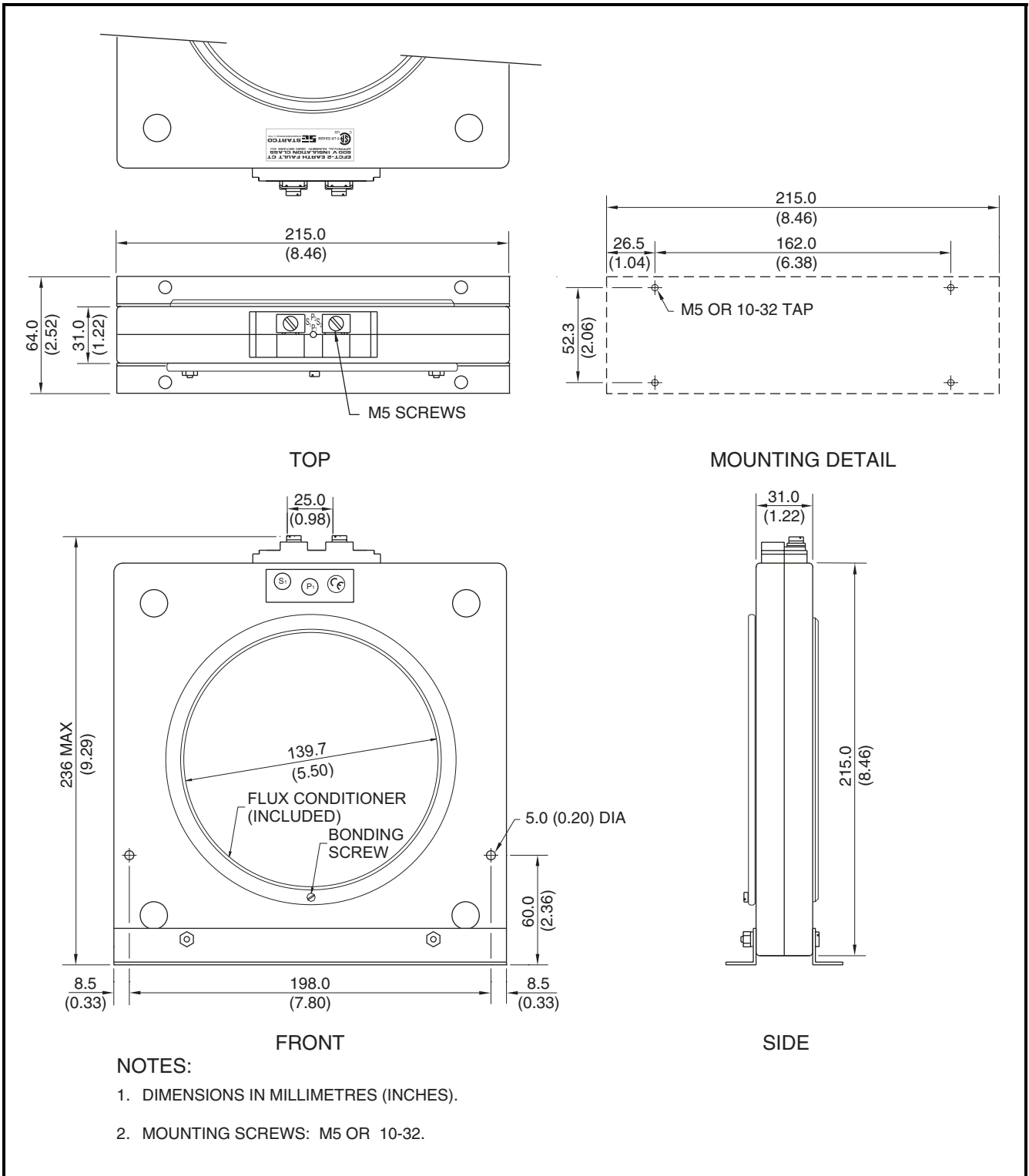


FIGURE 4. EFCT-2 Sensitive Earth-Fault CT.

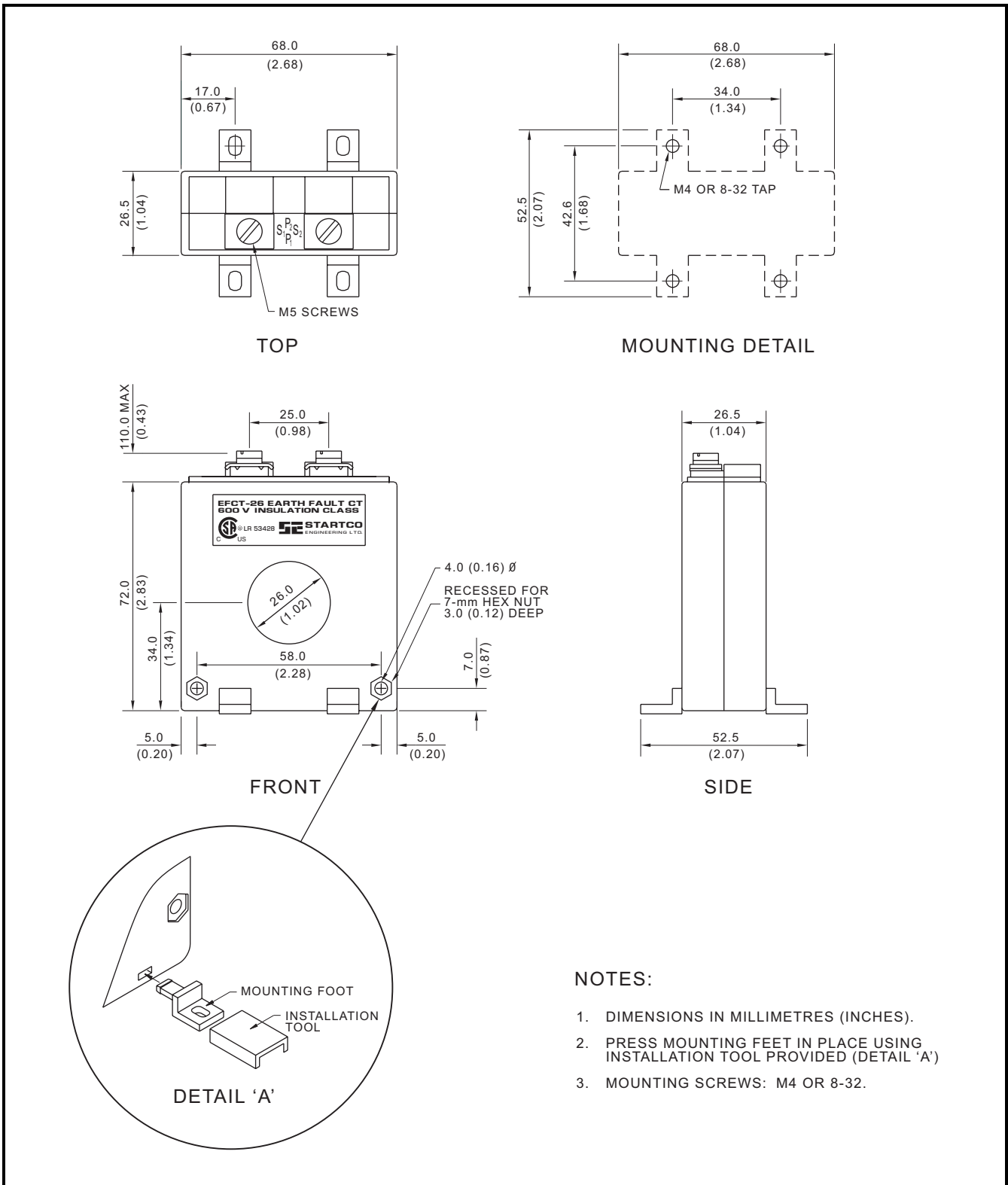


FIGURE 5. EFCT-26 Sensitive Earth-Fault CT.

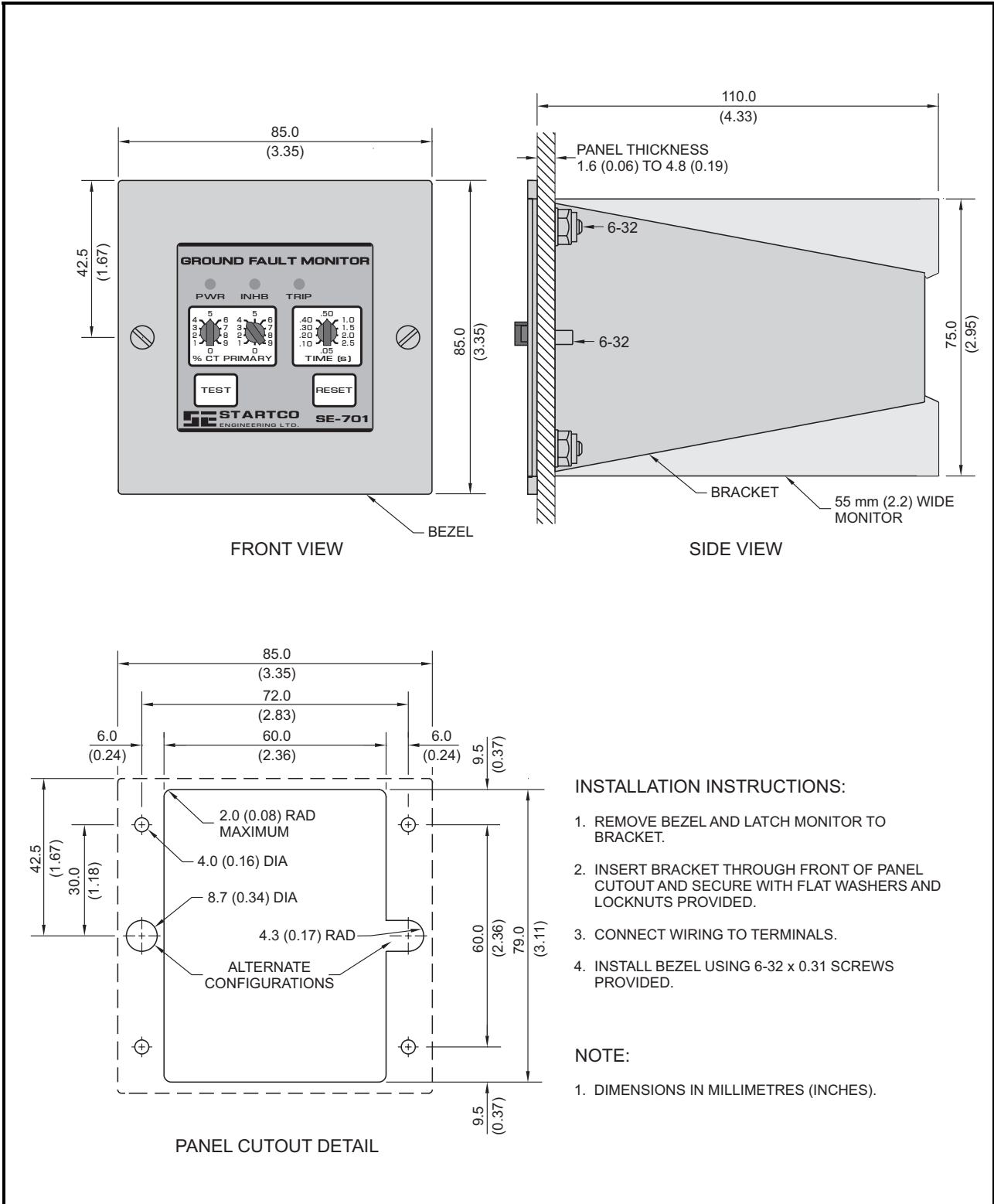


FIGURE 6. PMA-55 Panel-Mount Adapter.

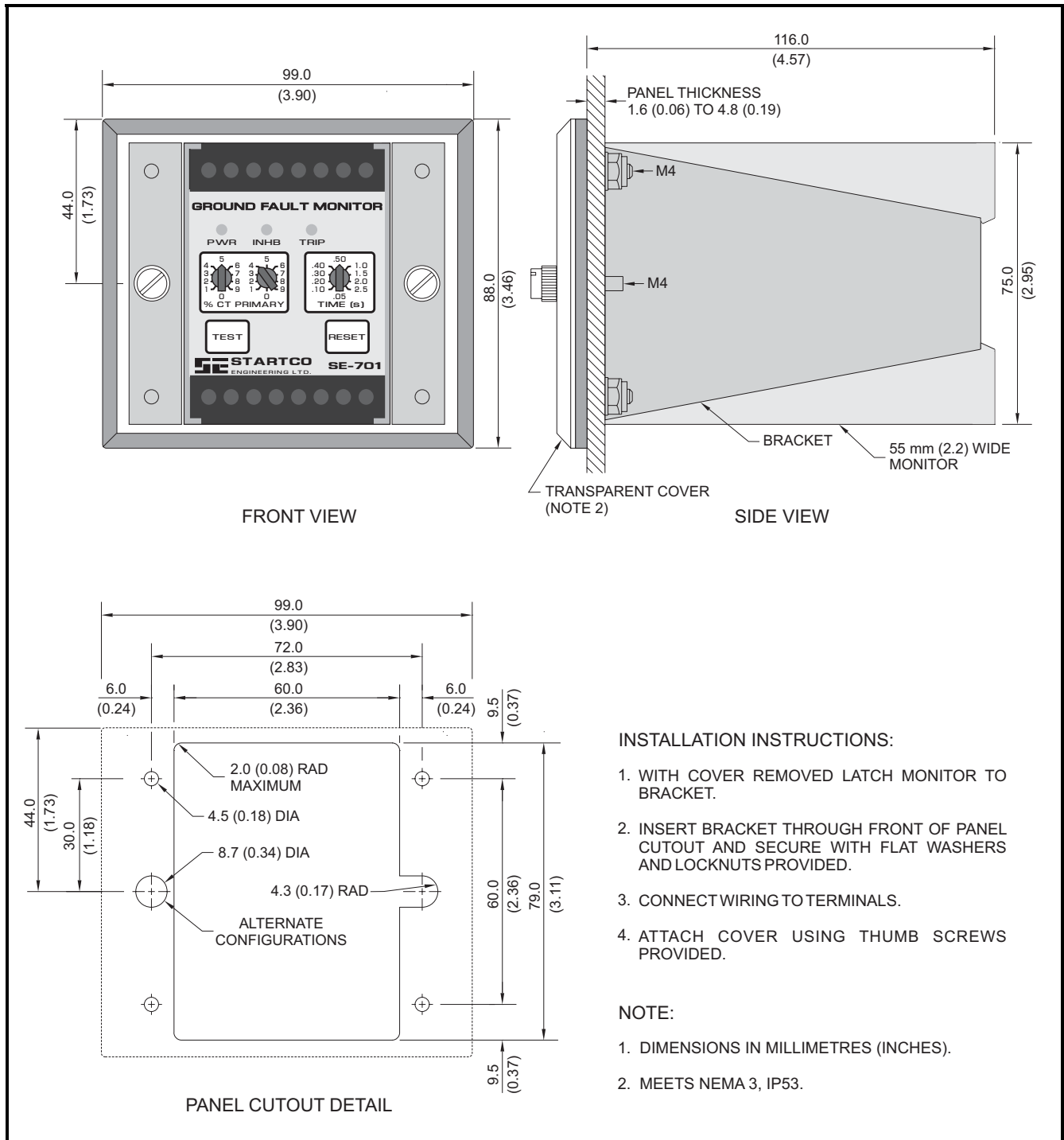


FIGURE 7. PMA-60 Panel-Mount Adapter



5. TECHNICAL SPECIFICATIONS

Supply:

01 Option.....	2.5 VA, 120 Vac, (+15, -40%), 50/60 Hz
02 Option.....	2.5 VA, 240 Vac, (+15, -40%), 50/60 Hz
03 Option.....	2.5 VA, 24 Vac, (+15, -40%), 50/60 Hz
0U Option.....	2.5 VA, 120 to 240 Vac, (+20, -55%) 50/60 Hz 2.0 W, 100 to 240 Vdc, (+20, -25%)
0D Option.....	2.0 W, 12 to 30 Vdc, (+20, -25%)
0T Option	2.0 W, 40 to 55 Vdc, (+20, -25%)

Trip-Level Range..... 1 to 99% CT-Primary
Rating in 1% increments
(50 mA to 4.95 A with
EFCT-x)

Trip-Time Settings.....0.05, 0.10, 0.20, 0.30,
0.40, 0.50, 1.0, 1.5, 2.0,
and 2.5 s

Accuracies ⁽¹⁾:

Trip Level ⁽²⁾	Largest of 5% of setting or:
1-A input:	
1% setting	-10, +15 mA
2 – 99% setting.....	10 mA
5-A and EFCT ⁽⁴⁾ inputs:	
1% setting	-35, +60 mA
2 – 99% setting.....	35 mA
Trip Time ⁽³⁾	5% of setting (-25, +20 ms minimum)

Trip Inhibit:

Off	Class I
On	Class II
Level	11 x CT-Primary Rating

Input:

Algorithms	DFT or Peak
DFT 3 dB Frequency Resp.	32 to 86 Hz
Peak 3 dB Frequency Resp.	20 to 420 Hz
CT	1- or 5-A Secondary Rating, or EFCT-x
CT Detection	Open-Circuit Detection with EFCT-x

Thermal Withstand:

Continuous	5 x CT-Secondary Rating
1-Second.....	80 x CT-Secondary Rating

Burden:

5-A input	< 0.01 Ω
1-A input	< 0.05 Ω
EFCT input.....	2 Ω

Analog Output:

Range	0 to 5 Vdc, 5 V = 100% CT Rating
Output Impedance	220 Ω

Reset

Front-Panel Switch and
Remote N.O. Momentary
Contact

Functional Test..... Front-Panel Switch

Relay Contacts:

Configuration	Isolated N.O. and N.C.
Operating Mode	Fail-Safe or Non-Fail-Safe
CSA/UL Contact Rating.....	8 A resistive 250 Vac, 8 A resistive 30 Vdc

Supplemental Contact Ratings:

Make/Carry 0.2 s	20 A
Break:	
dc	30 W resistive, 15 W inductive (L/R=0.04)
ac	2,000 VA resistive, 1,400 VA inductive (PF = 0.4)
Subject to maximums of 8 A and 250 V (ac or dc).	

Operating Mode

Latching or Autoreset

Terminals..... Wire-clamping,
24 to 12 AWG
(0.2 to 2.5 mm²) conductors

Dimensions:

Height.....	75 mm (3.0")
Width.....	55 mm (2.2")
Depth.....	115 mm (4.5")

Shipping Weight..... 0.45 kg (1 lb.)

Environment:

Operating Temperature	-40 to 60°C
Storage Temperature	-55 to 80°C
Humidity	85% Non-Condensing

Surge Withstand..... ANSI/IEEE 37.90.1-1989
(Oscillatory and Fast
Transient)



EMC Tests:

Verification tested in accordance with EN 50263:2000

Electrostatic Discharge.....	IEC 61000-4-2, EN 61000-4-2, 6 kV Contact Discharge 8 kV Air Discharge
Radiated RF.....	IEC 61000-4-3, EN 61000-4-3 10 V/m, 80-1000 MHz, 80% AM (1 kHz) 10 V/m, 900 MHz, 200 Hz Pulse Modulated
Fast Transient.....	IEC 61000-4-4, EN 61000-4-4 ±2 kV Common Mode ±1 kV Differential Mode
Surge Immunity.....	IEC 61000-4-5, EN 61000-4-5 ±2.0 kV Common Mode ±1.0 kV Differential Mode
Conducted RF	IEC 61000-4-6, EN 61000-4-6 10Vrms, 0.15-80 MHz, 80% AM (1 kHz)
Magnetic Field	IEC 61000-4-8, EN 61000-4-8 50 Hz, 30 A/m (continuous) 50 Hz, 300 A/m (1 to 3 seconds)
Voltage Interruption.....	IEC 255-22-11, EN 60255-11 100% for 2, 5, 10, 20, 50, 100 & 200 ms
MHz Burst.....	IEC.255-22-1, EN 60255-22-1 1 kV Differential Mode 2.5 kV Common Mode
RFI Compliance	FCC Part 15, Subpart B, Class A – Unintentional Radiators
Certification	CSA, Canada and USA



NOTES:

- (1) Over operating temperature range of -40 to 60°C.
- (2) CT accuracy not included.
- (3) Trip time at 3 x trip-level setting.
- (4) For maximum lead resistance of 1 Ω.

6. ORDERING INFORMATION

SE-701-0	
	1 120-Vac Supply
	2 240-Vac Supply
	3 24-Vac Supply
	U Universal 120/240-Vac/Vdc Supply
	D 12/24-Vdc Supply
	T 48-Vdc Supply

EFCT-1	Sensitive Earth-Fault CT, 5-A-primary rating, 82-mm (3.2") window
EFCT-1FC	Flux Conditioner for EFCT-1, 70-mm (2.7") window
EFCT-2	Sensitive Earth-Fault CT, with Flux Conditioner, 5-A-primary rating, 139-mm (5.5") window
EFCT-26	Sensitive Earth-Fault CT, 5-A-primary rating, 26-mm (1") window
PMA-55	Panel-Mount Adapter, NEMA 1
PMA-60	Panel-Mount Adapter, NEMA 3, IP53
PMA-3	Adapter Plate, GES/MCGG
PMA-6	Adapter Plate, FPL-GFRM
PMA-15	Adapter Plate, MGFR
SE-EFVC.....	Voltage Clamp

Consult factory for custom mounting adapters.

7. WARRANTY

The SE-701 Ground-Fault Monitor is warranted to be free from defects in material and workmanship for a period of five years from the date of purchase.

Startco Engineering Ltd. will (at Startco's option) repair, replace, or refund the original purchase price of an SE-701 that is determined by Startco to be defective if it is returned to the Startco factory, freight prepaid, within the warranty period. This warranty does not apply to repairs required as a result of misuse, negligence, an accident, improper installation, tampering, or insufficient care. Startco Engineering Ltd. does not warrant products repaired or modified by non-Startco Engineering Ltd. personnel.

8. GROUND-FAULT PERFORMANCE TEST

To meet the requirements of the National Electrical Code (NEC), as applicable, the overall ground-fault protection system requires a performance test when first installed. A written record of the performance test is to be retained by those in charge of the electrical installation in order to make it available to the authority having jurisdiction. A test-record form is provided for recording the date and the final results of the performance tests. The following ground-fault system tests are to be conducted by qualified personnel:

- Evaluate the interconnected system in accordance with the overall equipment manufacturer's detailed instructions.
- Verify proper location of the ground-fault current transformer. Ensure the cables pass through the ground-fault-current-transformer window. This check can be done visually with knowledge of the circuit. The connection of the current-transformer secondary to the SE-701 is not polarity sensitive.
- Verify that the system is correctly grounded and that alternate ground paths do not exist that bypass the current transformer. High-voltage testers and resistance bridges can be used to determine the existence of alternate ground paths.
- Verify proper reaction of the circuit-interrupting device in response to a simulated or controlled ground-fault current. To simulate ground-fault current, use CT-primary current injection. Fig. 8 (a) shows a test circuit using a Startco SE-400 Ground-Fault-Relay Test Unit. The SE-400 has a programmable output of 0.5 to 9.9 A for a duration of 0.1 to 9.9 seconds. Set the test current to 120% of the SE-701 setting. Fig. 8 (b) shows a test circuit using a Startco SE-100T Ground-Fault-Relay Tester. The SE-100T provides a test current of 0.65 or 2.75 A for testing 0.5- and 2.0-A trip levels. Inject the test current through the current-transformer window for at least 2.5 seconds. Verify that the circuit under test has reacted properly. Correct any problems and re-test until the proper reaction is verified.
- Record the date and the results of the test on the attached test-record form.

NOTE: Do not inject test current directly into CT-input terminals 1, 2, 3, 4, and 5.

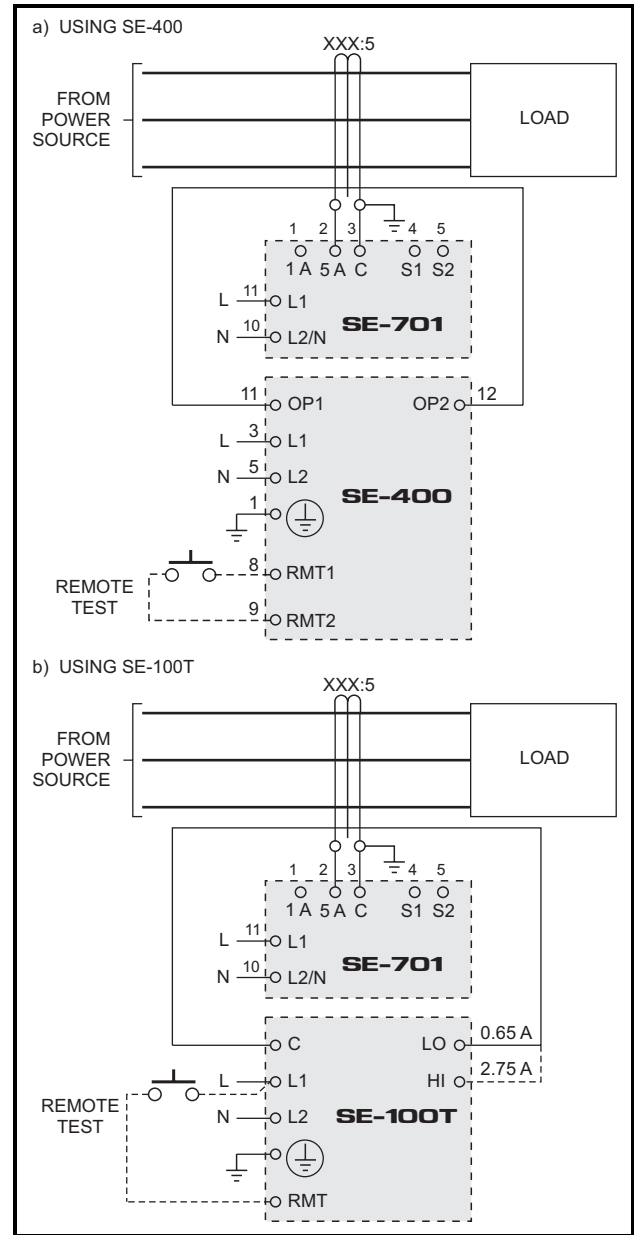


FIGURE 8. Ground-Fault-Test Circuits

TABLE 2. GROUND-FAULT-TEST RECORD

DATE	TEST RESULTS

Retain this record for the authority having jurisdiction.