

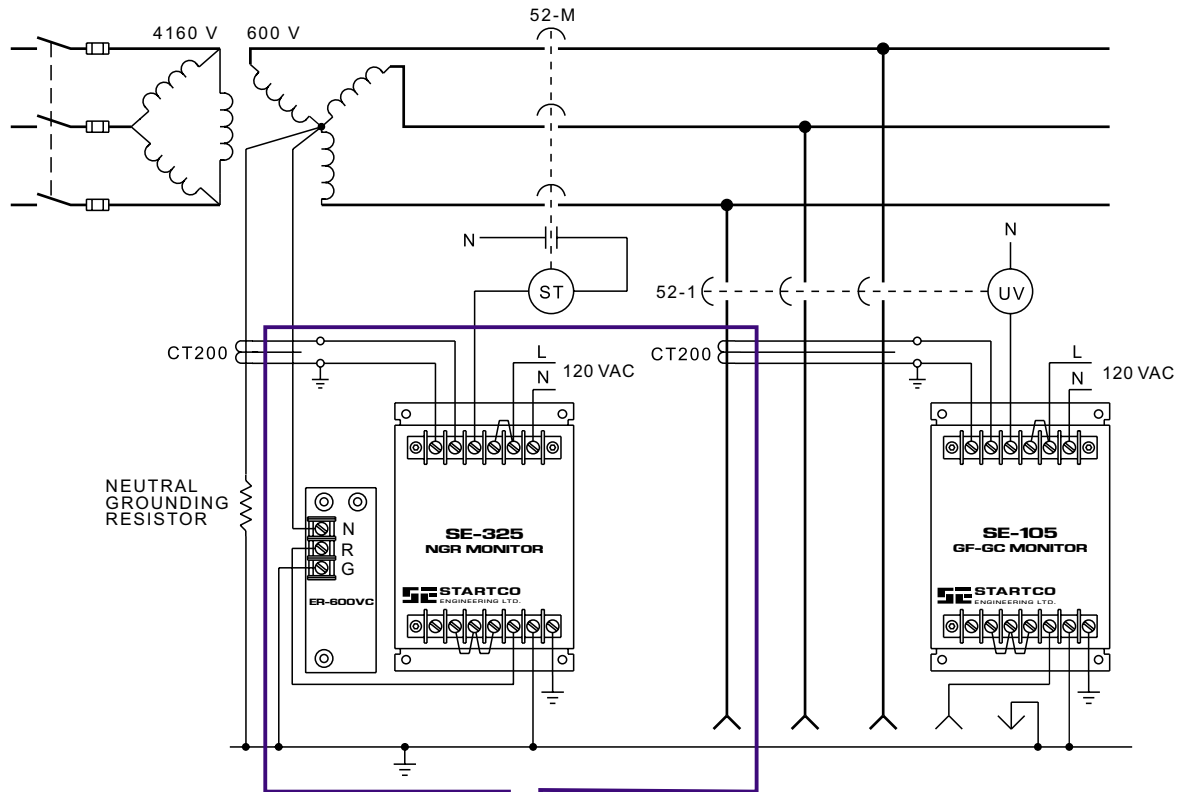
Manuals and additional
information available at
www.startco.ca

SE-400

GROUND-FAULT-RELAY TEST UNIT

The SE-400 is an ac current source with a programmable output. The magnitude and duration of the output burst can be selected with front-panel thumbwheel switches so that ground-fault-relay trip levels and trip times can be confirmed at the push of a button. A two-digit, LED display indicates the magnitude of the output current for the duration of the output burst.

TYPICAL APPLICATION



TECHNICAL SPECIFICATIONS

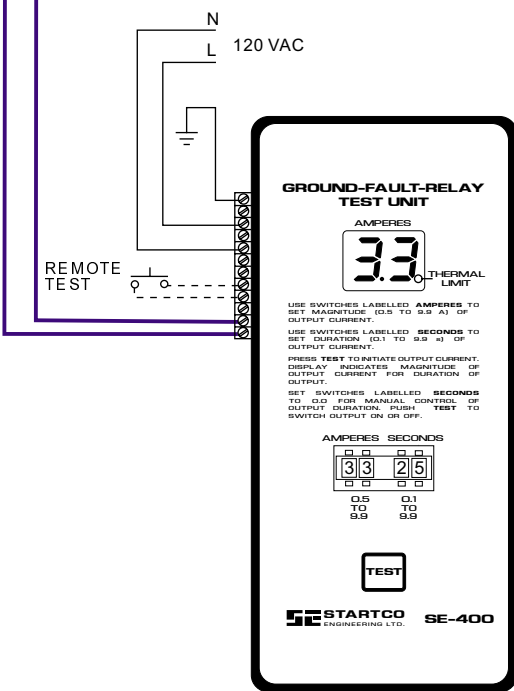
Supply:	
120 Vac (+12%, -30%), 50/60 Hz, 80 VA	
Fuse Rating	1 A, 250 Vac, Time Delay
Output:	
Magnitude	0.5 A to 9.9 A in 0.1-A increments
Duration	Continuous or 0.1 s to 9.9 s in 0.1-s increments 5.0 Vac max
Voltage	120 Vac
Duty Cycle @ 25°C:	
12 VA	Continuous
34 VA Maximum	15 minutes ON 30 minutes OFF
Accuracy	± 3%
Environment:	
Operating Temperature	-40°C to 60°C
Storage Temperature	-55°C to 80°C
Dimensions:	
Height	219 mm (8.6")
Width	99 mm (3.9")
Depth	143 mm (5.6")

ACCESSORIES

SE-410. Selector Switch

Specifications are subject to change without notice. Startco Engineering Ltd. is not liable for contingent or consequential damages, or for expenses sustained as a result of incorrect application, incorrect adjustment, or a malfunction.

Copyright © 1999.
Printed in Canada.
Publication: SE-400-D
Revised: 9904 Printed: 9904



406 Jessop Avenue, Saskatoon, Saskatchewan, Canada S7N 2S5
Phone: (306) 373-5505 Fax: (306) 374-2245 www.startco.ca