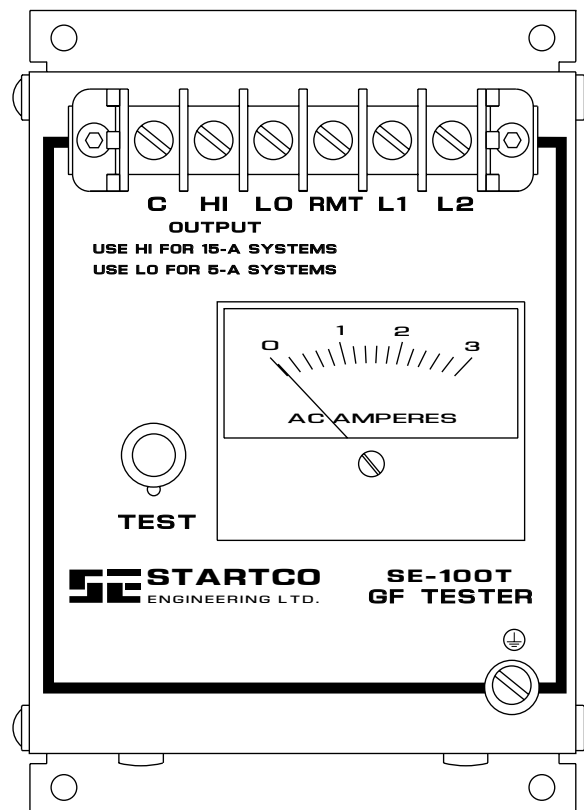


SE-100T MANUAL
GROUND-FAULT-RELAY TESTER

JANUARY 10, 2006

REVISION 3



Copyright © 2006 by Startco Engineering Ltd.

All rights reserved.

TABLE OF CONTENTS

	PAGE
Table of Contents	i
List of Figures.....	i
1. General	1
2. Installation and Operation.....	1
3. Technical Specifications	3
4. Ordering Information	3
5. Warranty.....	3

LIST OF FIGURES

FIGURE	PAGE
1. SE-100T Outline and Mounting Details	1
2. Typical Application	2

DISCLAIMER

Specifications are subject to change without notice. Startco Engineering Ltd. is not liable for contingent or consequential damages, or for expenses sustained as a result of incorrect application, incorrect adjustment, or a malfunction

1. GENERAL

The SE-100T is a ground-fault-relay tester for 5-A and 15-A resistance-grounded systems. The SE-100T has an output ammeter, a test pushbutton, low (LO) and high (HI) outputs, and a remote-test input (RMT). Test currents of 0.65 A (LO) or 2.75 A (HI) are provided for injection in window-type current transformers. Multiple CT wraps can provide a window current that is a multiple of the ammeter reading.

2. INSTALLATION AND OPERATION

SE-100T outline and mounting details are shown in Fig. 1. Typical connections are shown in Fig. 2.

Connect supply voltage to L1 and L2. Connect chassis bonding terminal \oplus to ground. Loop a test wire through the windows of the ground-fault CT's. Connect one end of the test wire to terminal C and the other end to terminal LO or terminal HI for a test current of 0.65 or 2.75 A. For remote operation, connect a normally open contact between terminals L1 and RMT. To test ground-fault-relay operation, press the test pushbutton for an interval that is longer than the time-delay setting of the relay or relays being tested. If precise current adjustment or a timed output is required, use the SE-400 ground-fault-relay test unit.

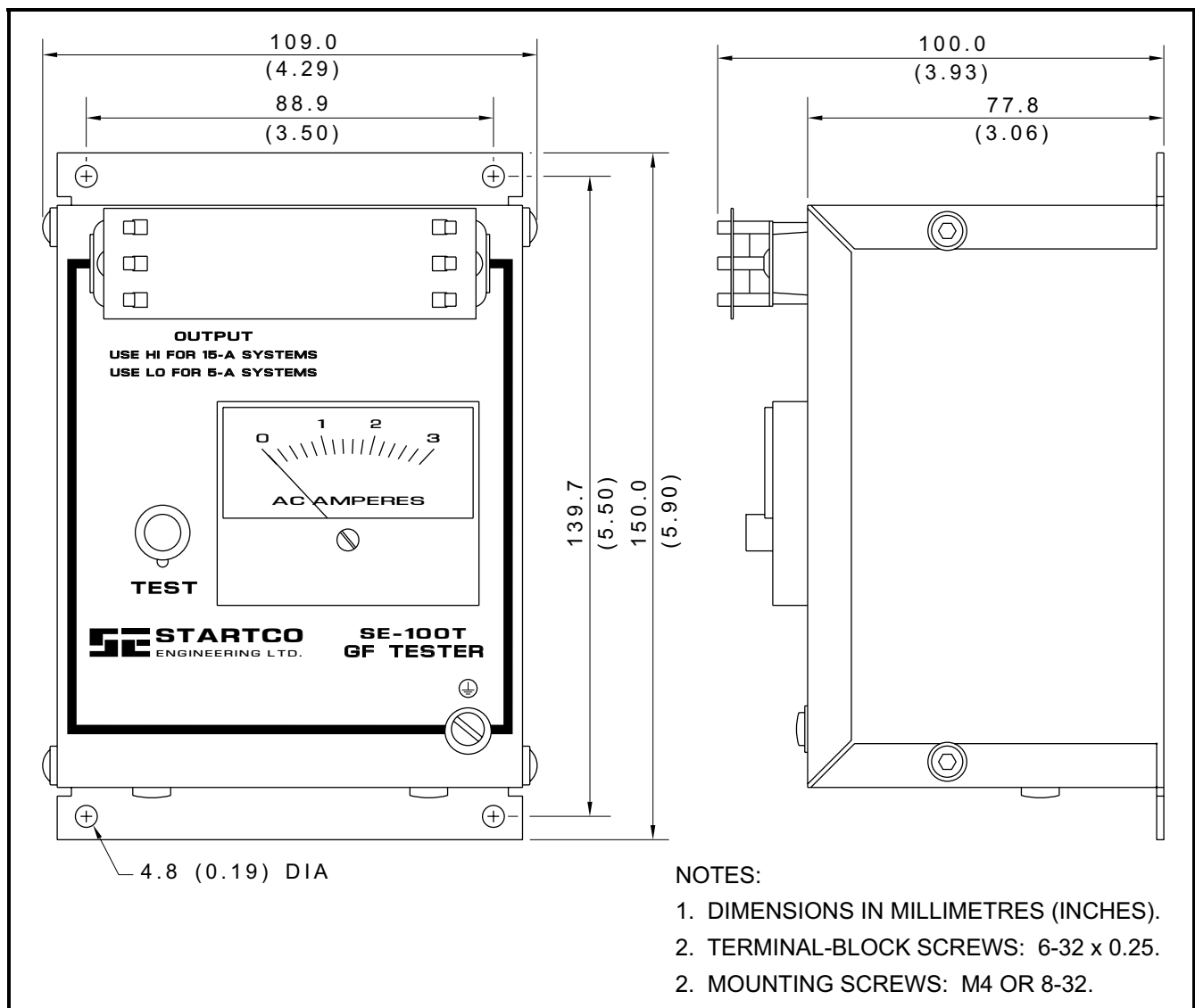


FIGURE 1. SE-100T Outline and Mounting Details.

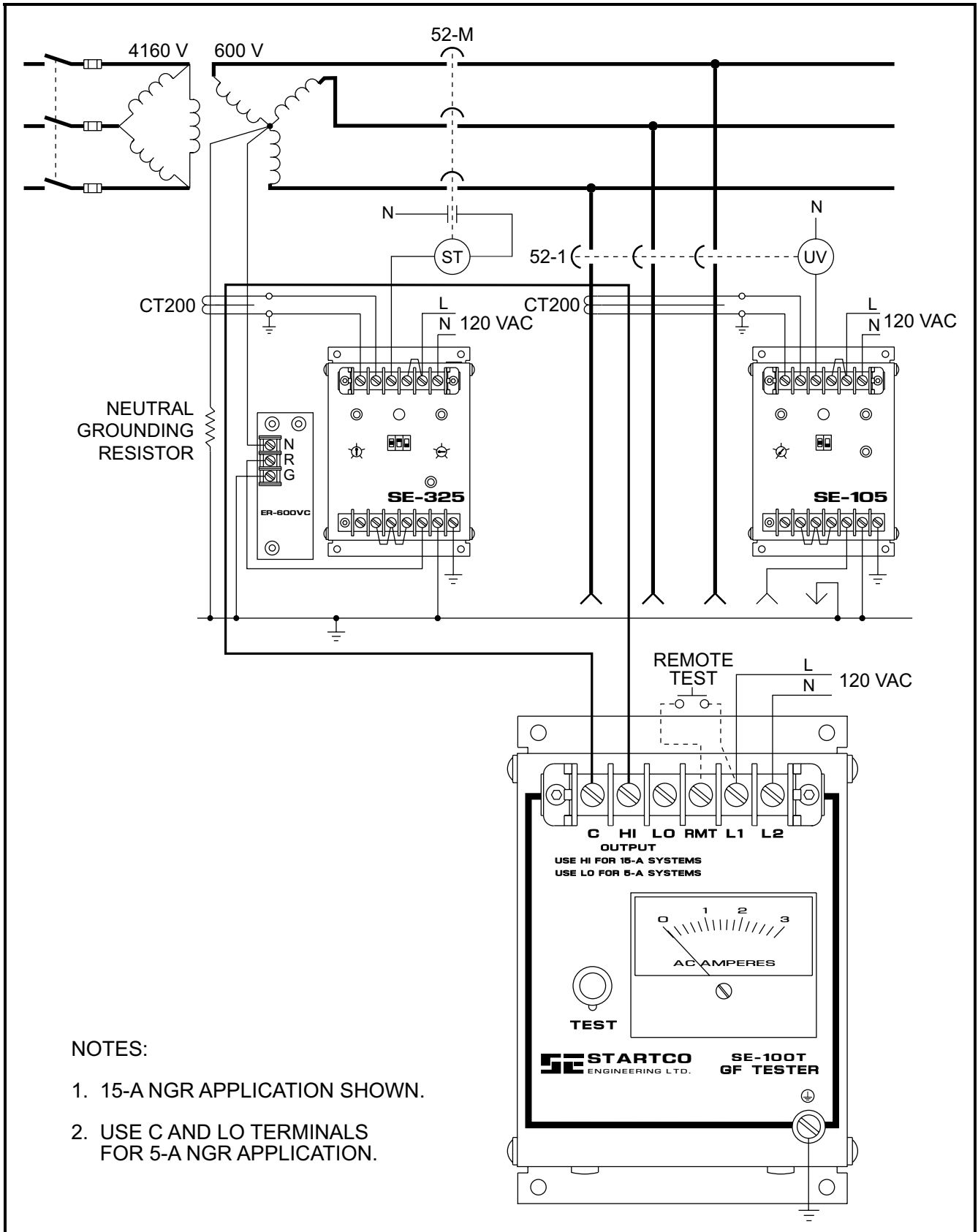


FIGURE 2. Typical Application.

3. TECHNICAL SPECIFICATIONS

Supply: 120 Vac $\pm 10\%$, 60 Hz,
30 VA

Output:

LO ⁽¹⁾ 0.65 \pm 0.1 A Continuous
HI ⁽¹⁾ 2.75 \pm 0.5 A Thermally
Limited
Open-Circuit Voltage 6.3 Vac
Maximum Burden 0.5 Ω

Environment:

Operating Temperature -40°C to 50°C
Storage Temperature -55°C to 80°C

Dimensions:

Height 150 mm (5.9")
Width 109 mm (4.3")
Depth 100 mm (4.0")

Shipping Weight 1 kg (2.2 lb)

Certification CSA, Canada and USA



⁽¹⁾ Supply Voltage and Output Burden Dependent

4. ORDERING INFORMATION

SE-100T Ground-Fault-Relay Tester

Accessories:

SE-410 10-Position Selector Switch

5. WARRANTY

The SE-100T Ground-Fault-Relay Tester is warranted to be free from defects in material and workmanship for a period of five years from the date of purchase.

Startco Engineering Ltd. will (at Startco's option) repair, replace, or refund the original purchase price of an SE-100T that is determined by Startco to be defective if it is returned to the Startco factory, freight prepaid, within the warranty period. This warranty does not apply to repairs required as a result of misuse, negligence, an accident, improper installation, tampering, or insufficient care. Startco Engineering Ltd. does not warrant products repaired or modified by non-Startco Engineering Ltd. personnel.

Startco Engineering Ltd. is not liable for contingent or consequential damages; for expenses sustained as a result of incorrect application, incorrect adjustment, or a malfunction; or for expenses resulting from the use of, or inability to use, the product.