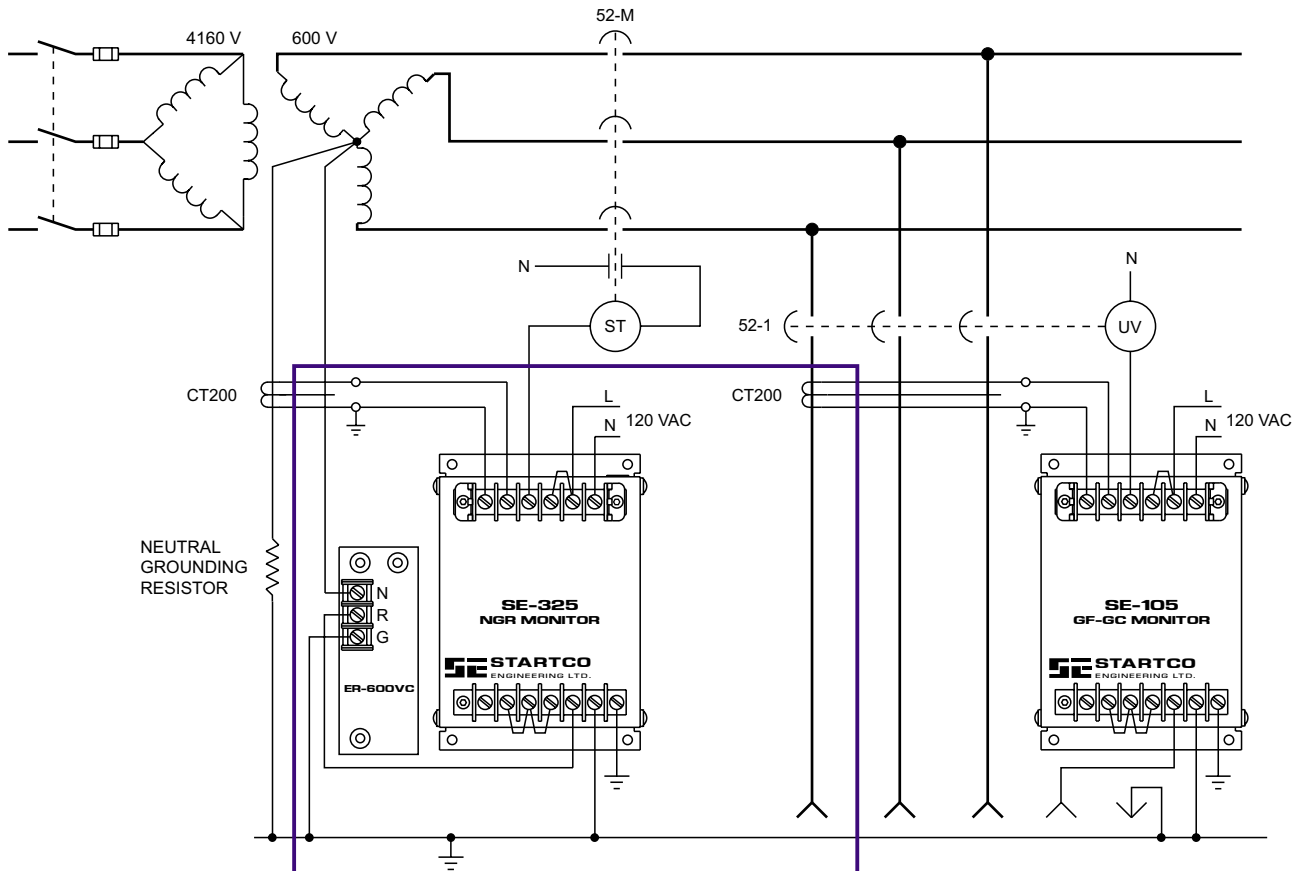


Manuals and additional
information available at
www.startco.ca

SE-100T GROUND-FAULT-RELAY TESTER

The SE-100T is a ground-fault-relay tester for 5-A and 15-A resistance-grounded systems. The SE-100T features an output ammeter, a test pushbutton, low (LO) and high (HI) outputs, and a remote-test input (RMT). Test currents of 0.65 A (LO) or 2.75 A (HI) are provided for injection in window-type current transformers. Multiple CT wraps can provide a window current that is a multiple of the ammeter reading. The output is energized while the test button is pressed.

TYPICAL APPLICATION



TECHNICAL SPECIFICATIONS

Supply:
120 Vac \pm 10%, 60 Hz, 15 VA

Output:
Current (LO) * 0.65 \pm 0.1 A
Current (HI) * 2.75 \pm 0.5 A
Open-Circuit Voltage 6.3 Vac
Maximum Burden 0.5 Ohm

Duty Cycle:
LO Continuous
HI 2 min. ON, 5 min. OFF

Environment:
Operating Temperature -40°C to 50°C
Storage Temperature -55°C to 80°C

Dimensions:
Height 150 mm (5.9")
Width 109 mm (4.3")
Depth 100 mm (4.0")

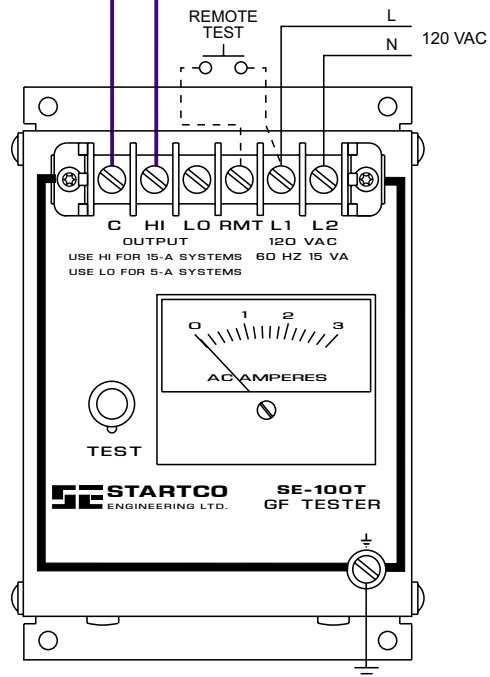
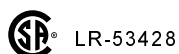
* Supply Voltage and Output Burden Dependent

ACCESSORIES

SE-410. Selector Switch

Specifications are subject to change without notice. Startco Engineering Ltd. is not liable for contingent or consequential damages, or for expenses sustained as a result of incorrect application, incorrect adjustment, or a malfunction.

Copyright © 1999.
Printed in Canada.
Publication: SE-100T-D
Revised: 9904 Printed: 9904



406 Jessop Avenue, Saskatoon, Saskatchewan, Canada S7N 2S5
Phone: (306) 373-5505 Fax: (306) 374-2245 www.startco.ca