

SE-MRE-25 MOISTURE RESISTANT ENCLOSURE FOR THE ER-25KV AND ER-35KV SENSING RESISTORS

INSTALLATION INSTRUCTIONS

MATERIALS SUPPLIED

- 1 Junction Box Base
- 1 Junction Box Cover
- 4 6-32 x 0.500" T-10 Torx Head Screw
- 1 Silicone Sealant
- 1 ER-35KV Specifications Label
- 1 MRE Label

TOOLS REQUIRED

- T-10 Torx Screwdriver
- 1/4" Flat Blade Screwdriver

INSTALLATION

1. Slip the left and right mounting brackets in place at the R and G terminal block end of the sensing resistor and align the mounting brackets from the edge as shown in Figures 1 & 2.

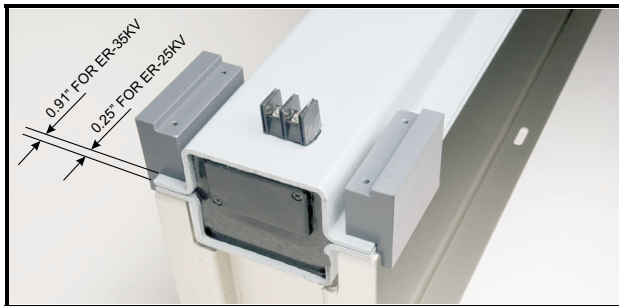


FIGURE 1

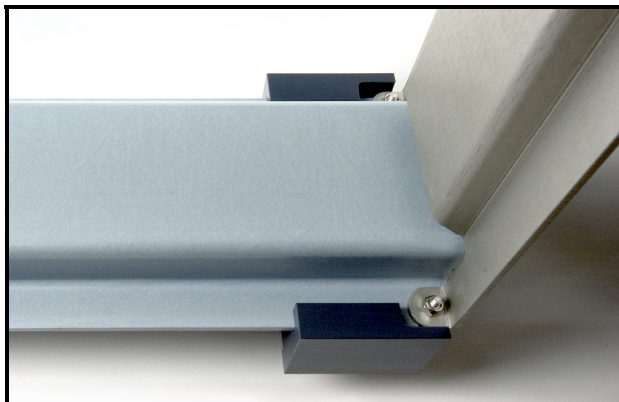


FIGURE 2

2. Use an alcohol-based cleaner to clean the top surface of the sensing resistor around the R and G terminal block and the bottom outer surface of the junction box base.

3. Apply a generous, continuous circular bead of silicone sealant to the top surface of the sensing resistor around the terminal block as shown in Figure 3.

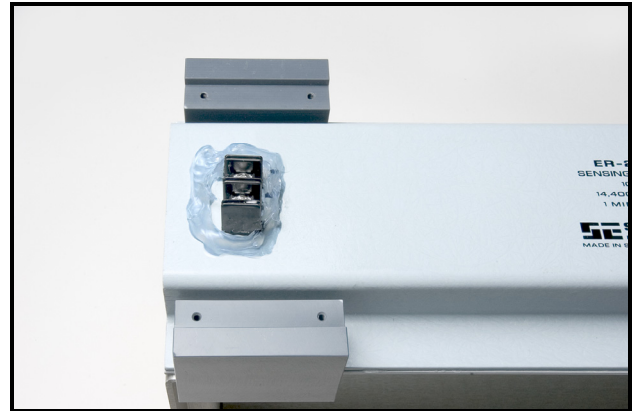


FIGURE 3

4. Place the junction box base on the top of the sensing resistor so that the terminal block protrudes through the rectangular opening in the bottom of the box as shown in Figure 4.

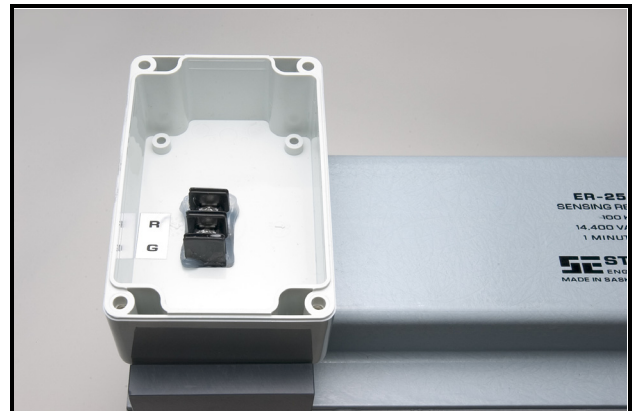


FIGURE 4

5. Insert the 6-32 x 0.500" Torx head screws through the mounting holes in the junction box base and thread screws into tapped holes in the top of the mounting brackets as shown in Figure 5. Tighten the screws lightly, then align the brackets so that the edge of the junction box is in line with the edge of the sensing resistor. Tighten the mounting screws until the sealant squeezes up around the terminal block to provide a continuous seal. Wipe the sealant smooth around the terminal block as shown in Figure 6.

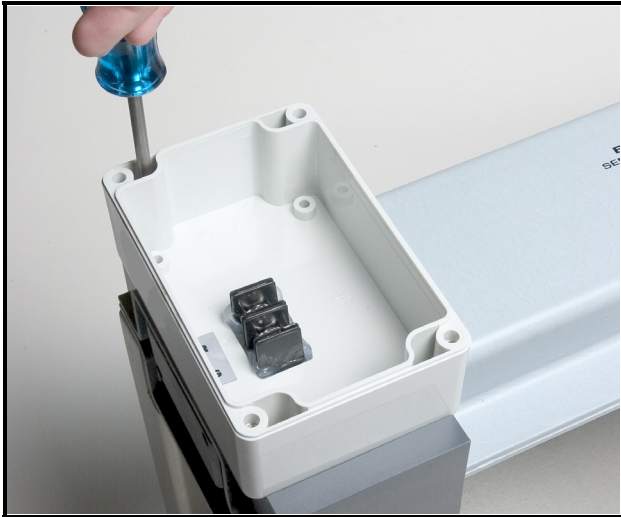


FIGURE 5



FIGURE 6.

6. Affix the MRE label to the serial number label as shown in Figure 7.



FIGURE 7

7. For ER-35KV installations only, affix the ER-35KV specification label to the top outer surface of the junction box cover.



FIGURE 8

8. Allow the sealant to cure at least 24 hours before putting the sensing resistor in service. Ensure that a watertight gland is used for the cable entry into the junction box and that the junction box cover is installed and the cover screws are tight.