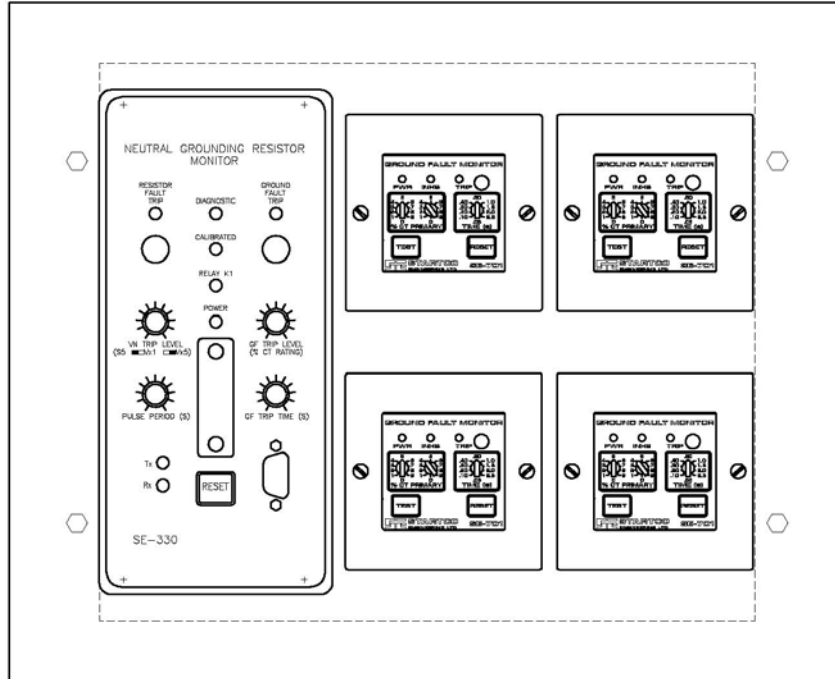


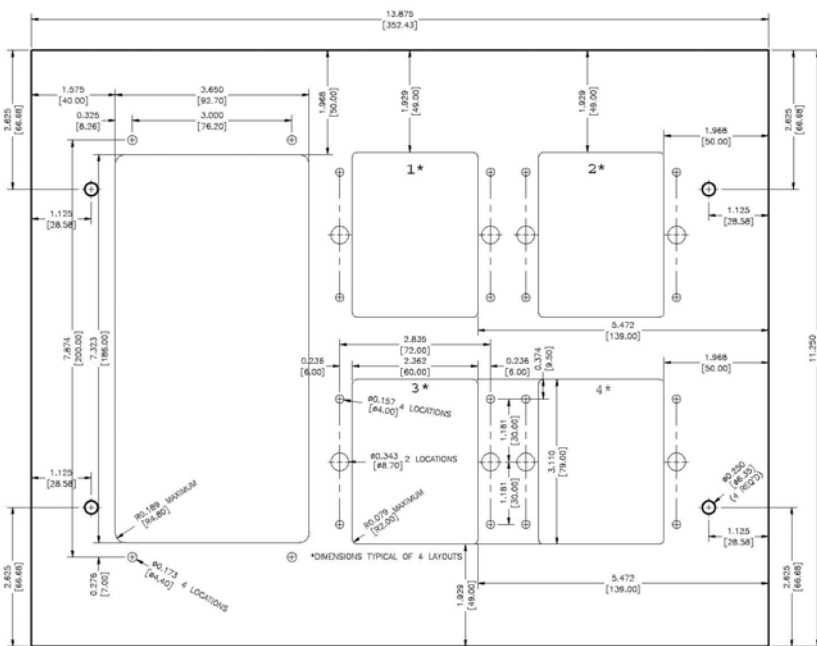


12.20 TECHNICAL INFORMATION

TITLE: PMA-20 WESTINGHOUSE GFA UPGRADE ADAPTER II



PMA-20-14 with SE-330, SE-701's, and PMA-55's



PMA-20-14

*Order of SE-701/PMA-55 cut-outs.

ORDERING INFORMATION:

PMA-20 - 1 SE-701 quantity, 0-4

SE-330, SE-701's, and PMA-55's must be ordered separately.

DATE	REV	AUTHOR	DOCUMENT LOCATION	PAGE
2009-Mar-09	0	MS	http://www.startco.ca/library/techinfo/section12/12.20.pdf	1 of 1